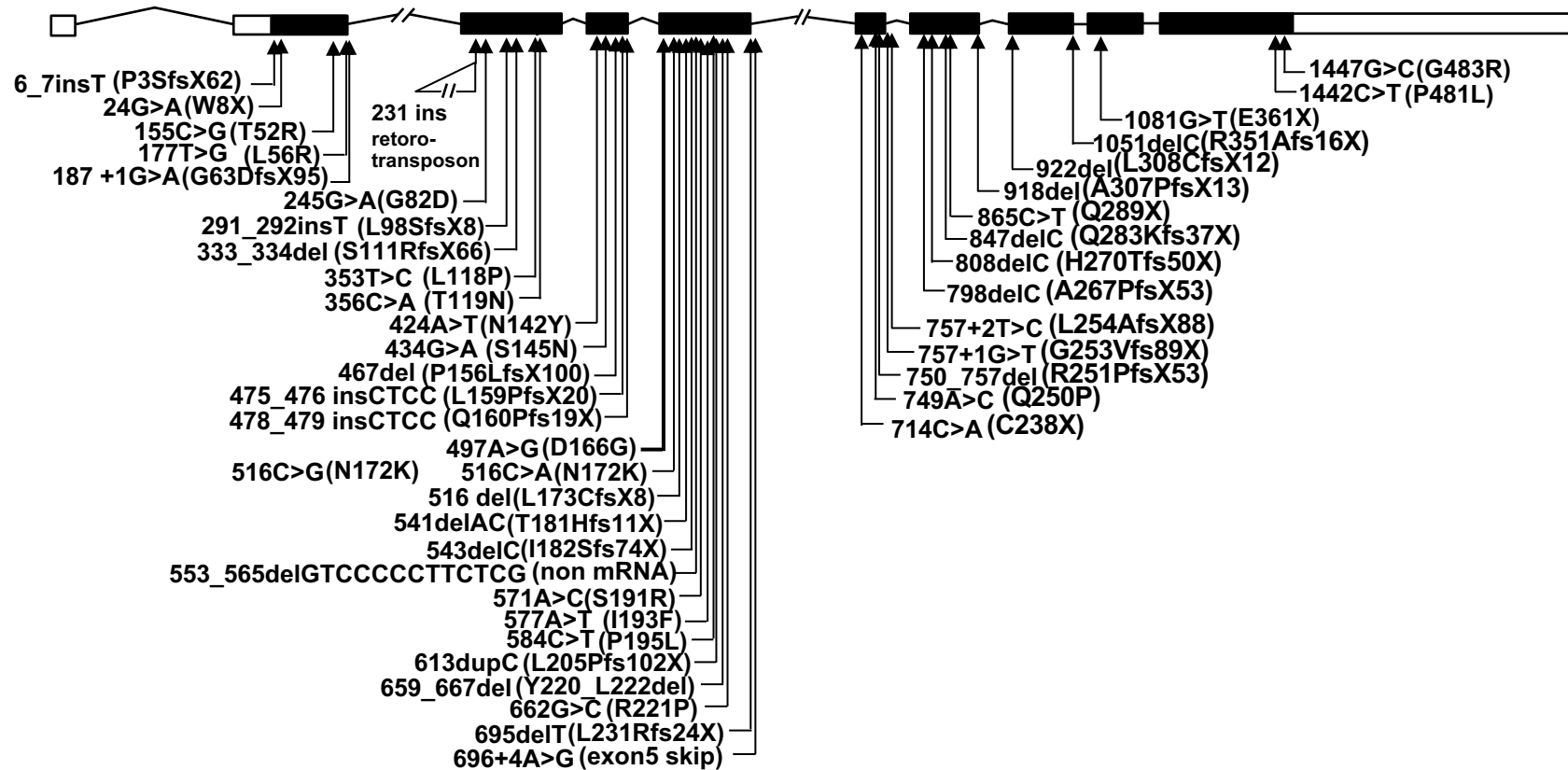
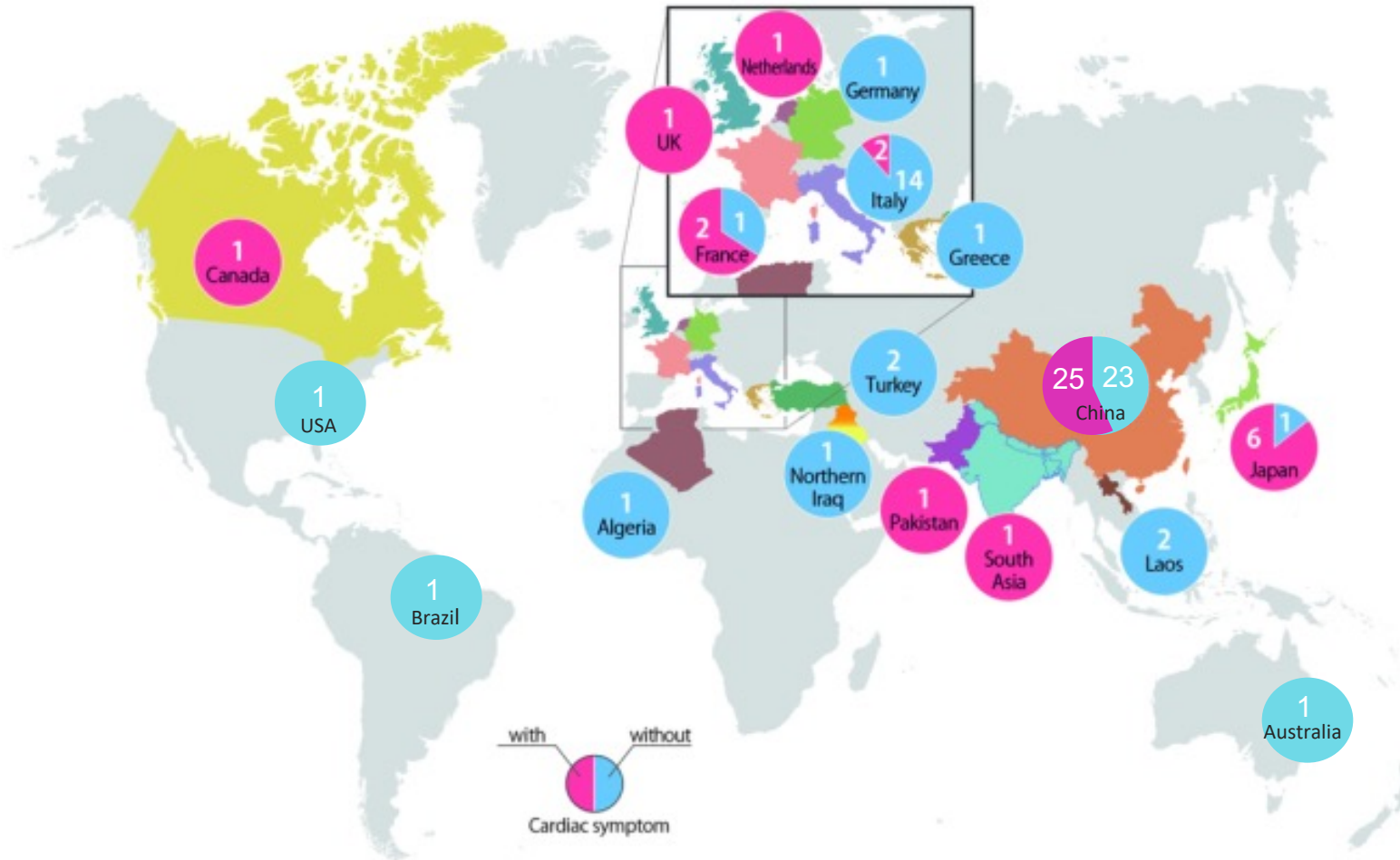


Mutations in *PNPLA2* in patients with NLS-D-M



(kindly provided from Yasuhiro Hara, PhD, Osaka, Japan)

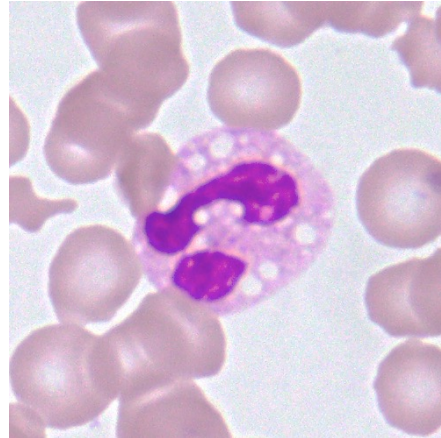
Global Distribution of Patients with NLSD-M



(Hirano K, et al. Human Pathobiochemistry 2018, updated)

Simple diagnostic algorithm for NLSD-M

Patients with disabling, uncertain myopathy, or hyperCKemia



Jordans' anomaly,
detected in blood smear
or automated hematology analyzers



Genetic test for *PNPLA2*